

catalogue 2021

**Snooze**<sup>®</sup>  
*baby*  
AMSTERDAM

Index

6  
Milky Rust  
products on 12

14  
Stone Beige  
products on 20

22  
Warm Brown  
products on 26

28  
Smokey Green  
products on 34

36  
Bumble-  
bee  
products on 41

42  
Gray Mist  
products on 45

 Organic cotton

46  
Dusty Rose  
products on 49


50  
Midnight Blue  
products on 53

54  
Orchid Blush  
products on 57

58  
Frost Grey  
products on 64

66  
Muddy River  
products on 69

70  
Activity Toys  
products on 74

 Oeko-Tex Standard



## How snoozebaby was born

When we noticed that certain soft fabrics had a calming effect on our premature baby, we decided to create a blanket for him with several soft tags, in different colours, made of different fabrics.

Since it was offering him comfort and joy (and as a consequence also to us), we thought this concept might be something universal and more babies and parents should be able to benefit from this idea.

Nowadays, Snoozebaby offers an extensive range of ultra-soft, safe, playful, and yet functional and practical baby comfort products. Made of the finest materials, in the nicest colours and designs. And all featuring our love tags.

*Marleen Rameckers*  
- xx -

# Milky Rust



Organic cotton



**Trendy Wrapping**  
352

**Happy Dressing**  
252

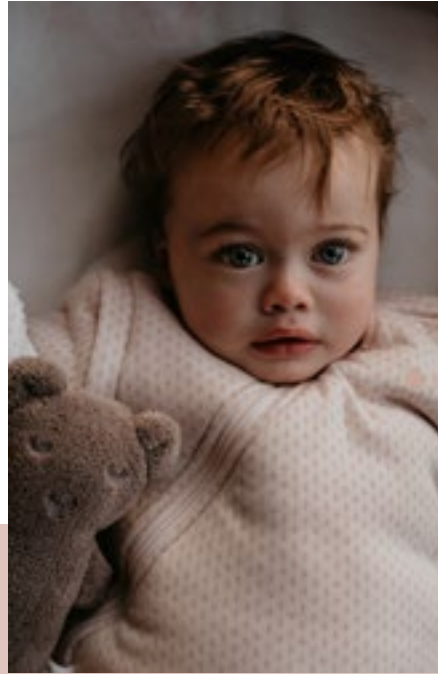
**Sleepsuit  
Cocoon**  
2089



**Sleepsuit  
Sleeveless**  
2110



**Sleepsuit  
4 seasons**  
2114



**Sleepsuit  
Longsleeve**  
2095



**Summer  
Blanket**  
Crib: 1037  
Cot: 1018

**Romy Rabbit**  
774



**Romper LS  
Rainbow**  
7563

**Winter  
Blanket**  
1030

**Sweat Dreaming**  
152

**Cheerful Playing**  
552





**Sleepsuit 4 seasons**  
**2114** (3-9m / 62-74cm)  
**2115** (9-24m / 74-95 cm)

Inner suit: 100% organic cotton // Outer suit: 100% organic cotton with ultra-thin recycled polyester filling // Ultrasoft and practical // including inner- and outer bag // Clever construction with zipper design // Can be used with open legs or closed legs // Packaging: polybag and hangtag // Winter, outer + inner suit (tog 3.0) // Autumn, outer suit with sleeves (tog 2.0) // Spring, outer suit without sleeves (tog 1.5) // Summer, inner suit without sleeves (tog 1.0)



**Sleepsuit Longsleeve**  
**winter tog 2.0**  
**2095** (3-9m / 62-74cm)  
**2092** (9-24m / 74-95 cm)

**Sleepsuit Sleeveless**  
**summer tog 1.0**  
**2110** (3-9m / 62-74cm)  
**2107** (9-24m / 74-95 cm)

100% organic cotton, recycled fiberfil filling // Clever zipper design // Packaging: polybag and hangtag



**Newborn Sleepsuit**  
**Cocoon**  
**2089** (0-3m) incl. hat  
**2101** (3-6m)

**Newborn Sleepsuit**  
**Cocoon Rainbow**  
**2098** (0-3m) incl. hat  
**2104** (3-6m)

100% organic cotton // Comfortable fit // Can be opened to easily change a baby // integrated gloves on the sleeves // Weight: 150 gr // Packaging: polybag and hangtag // tog 1.0



**Romper LS**  
**Rainbow**  
**7563**  
 50-56  
 62-68

**Suit**  
**Rainbow**  
**7564**  
 50-56  
 62-68

**Pyjama**  
**Rainbow**  
**7567**  
 74-80  
 86-92

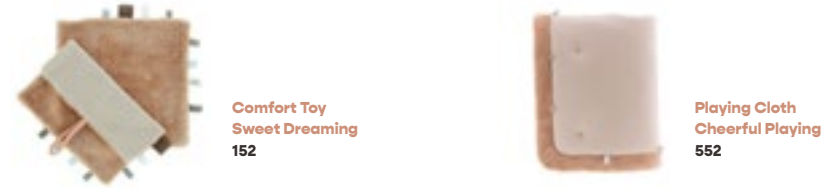
100% organic cotton // Weight: 150 gr // A lovely sleeping cocoon with a comfortable fit // Can be opened, to easily change a baby // integrated gloves on the sleeves // Packaging: polybag and hangtag



**Summer Blanket**  
 Crib: **1037**  
 Cot: **1018**  
 tog 1.0

**Winter Blanket**  
 Crib: **1033**  
 Cot: **1030**  
 tog 2.0

Summer Blanket: 100% organic cotton // Winter Blanket: 50% organic cotton, 50% recycled coral // Crib: 75 cm x 100 cm // Cot: 100 cm x 150 cm // Packaging: polybag and hangtag



**Comfort Toy**  
**Sweet Dreaming**  
**152**

**Playing Cloth**  
**Cheerful Playing**  
**552**

50% organic cotton, 50% recycled coral // Size 25 x 25 cm // Weight: 55 gr // Offers comfort and joy // Stimulates fine motorskills // Promotes sense of touch // SD packaging: display card and hangtag

50% organic cotton, 50% recycled coral // Size: 75 x 95 cm // Weight: 825 gr // Filling: recycled fibre fill // Thick and soft matress // Tags to stimulate rolling, reaching & crawling // Packaging: polybag and hangtag



**Wrap Blanket**  
**Trendy Wrapping**  
**352**

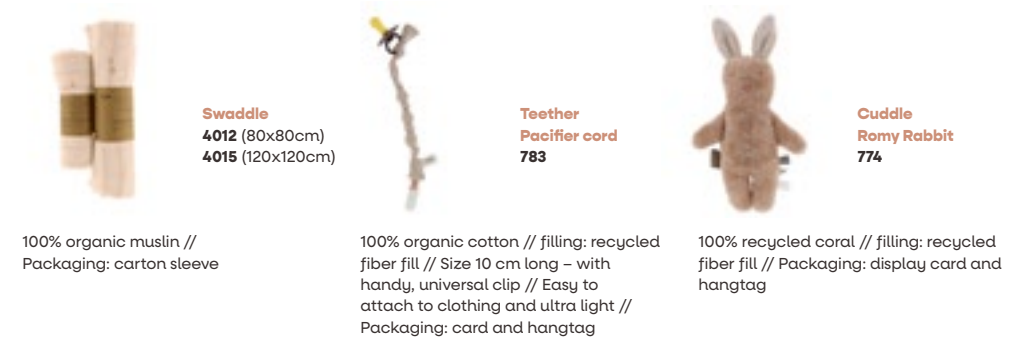
**Changing Mat**  
**Happy Dressing**  
**252**

**Feeding Pillow**  
**3020**

Outside: 100% organic cotton, inside: 100% recycled coral // Double layer // Size 90x110 cm // Weight: 420 gr // For baby carriers with 3 and 5 point seatbelt // For buggy or carseat, group 0 // Packaging: fabric bag and sleeve

50% organic cotton, 50% recycled coral // Size: 45 x 72 cm // Weight: 225 gr // Fits a standard cushion // Entertains baby while changing // Packaging: fabric bag and sleeve

50% organic cotton, 50% recycled coral // Filling: 100% recycled fibre fill // Size: 75 x 20 x 15 cm // Multi-purpose // Compact and ultra-soft // Packaging: polybag and hangtag



**Swaddle**  
**4012** (80x80cm)  
**4015** (120x120cm)

**Teether**  
**Pacifier cord**  
**783**

**Cuddle**  
**Romy Rabbit**  
**774**

100% organic muslin // Packaging: carton sleeve

100% organic cotton // filling: recycled fiber fill // Size 10 cm long - with handy, universal clip // Easy to attach to clothing and ultra light // Packaging: card and hangtag

100% recycled coral // filling: recycled fiber fill // Packaging: display card and hangtag

# Stone Beige



Organic cotton



Swaddle  
4014

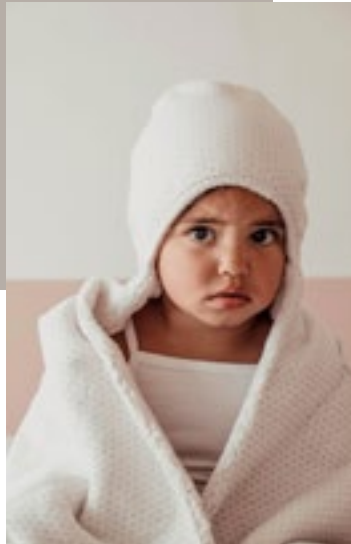




**Winter  
Blanket**  
1032

**Sleepsuit  
Longsleeve**  
2091

**Trendy  
Wrapping**  
351



**Bobby Bear**  
780



**Sleepsuit  
Cocoon**  
2088

**Sleepsuit  
Cocoon**  
2088

**Sweet  
Dreaming**  
151



**Footmuff**  
5008



**Sleepsuit  
4 seasons**  
2112



**< Happy  
Dressing**  
251



**<< Trendy  
Wrapping**  
351





Winter 3.0



Autumn 2.0



Spring 1.5



Summer 1.0

**Sleepsuit 4 seasons**  
2112 (3-9m / 62-74cm)  
2113 (9-24m / 74-95 cm)

Inner suit: 100% organic cotton // Outer suit: 100% organic cotton with ultra-thin recycled polyester filling // Ultrasoft and practical // including inner- and outer bag // Clever construction with zipper design // Can be used with open legs or closed legs // Packaging: polybag and hangtag // Winter, outer + inner suit (tog 3.0) // Autumn, outer suit with sleeves (tog 2.0) // Spring, outer suit without sleeves (tog 1.5) // Summer, inner suit without sleeves (tog 1.0)



**Sleepsuit Longsleeve**  
winter tog 2.0  
2091 (3-9m / 62-74cm)  
2094 (9-24m / 74-95 cm)



**Sleepsuit Sleeveless**  
summer tog 1.0  
2106 (3-9m / 62-74cm)  
2109 (9-24m / 74-95 cm)

100% organic cotton, recycled fiberfil filling // Clever zipper design // Packaging: polybag and hangtag



**Newborn Sleepsuit Cocoon**  
2088 (0-3m) incl. hat  
2100 (3-6m)

100% organic cotton // Comfortable fit // Can be opened to easily change a baby // integrated gloves on the sleeves // Weight: 150 gr // Packaging: polybag and hangtag // tog 1.0



**Newborn Sleepsuit Cocoon grey melange pinguin**  
2099 (0-3m) incl. hat  
2105 (3-6m)

100% organic cotton // Comfortable fit // Can be opened to easily change a baby // integrated gloves on the sleeves // Weight: 150 gr // Packaging: polybag and hangtag // tog 1.0



**Footmuff**  
5008

50% organic cotton, 40% recycled nylon and 10% recycled coral // filling: recycled fiber fill // Packaging: hangtag and polybag // Size: 40 x 80 cm



**Summer Blanket**  
Crib: 1017  
Cot: 1036  
tog 1.0

Summer Blanket: 100% organic cotton // Winter Blanket: 50% organic cotton, 50% recycled coral // Crib: 75 cm x 100 cm // Cot: 100 cm x 150 cm // Packaging: polybag and hangtag



**Winter Blanket**  
Crib: 1029  
Cot: 1032  
tog 2.0



**Comfort Toy Sweet Dreaming**  
151

50% organic cotton, 50% recycled coral // Size 25 x 25 cm // Weight: 55 gr // Offers comfort and joy // Stimulates fine motorskills // Promotes sense of touch // SD packaging: display card and hangtag



**Playing Cloth Cheerful Playing**  
551

50% organic cotton, 50% recycled coral // Size: 75 x 95 cm // Weight: 825 gr // Filling: recycled fibre fill // Thick and soft matress // Tags to stimulate rolling, reaching & crawling // Packaging: polybag and hangtag



**Wrap Blanket Trendy Wrapping**  
351

Outside: 100% organic cotton, inside: 100% recycled coral // Double layer // Size 90x110 cm // Weight: 420 gr // For baby carriers with 3 and 5 point seatbelt // For buggy or carseat, group 0 // Packaging: fabric bag and sleeve



**Changing Mat Happy Dressing**  
251

50% organic cotton, 50% recycled coral // Size: 45 x 72 cm // Weight: 225 gr // Fits a standard cushion // Entertains baby while changing // Packaging: fabric bag and sleeve



**Swaddle**  
4011 (80x80cm)  
4014 (120x120cm)

100% organic muslin // Packaging: carton sleeve



**Cuddle Ruby Rabbit**  
773

100% recycled coral // filling: recycled fiber fill // Packaging: display card and hangtag



**Cuddle Bobby Bear**  
780

100% recycled coral // filling: recycled fiber fill // Packaging: display card and hangtag



**Teether Pacifier cord**  
782

100% organic cotton // filling: recycled fiber fill // Size 10 cm long – with handy, universal clip // Easy to attach to clothing and ultra light // Packaging: card and hangtag



**Feeding Pillow**  
3019

50% organic cotton, 50% recycled coral // Filling: 100% recycled fibre fill // Size: 75 x 20 x 15 cm // Multi-purpose // Compact and ultra-soft // Packaging: polybag and hangtag

# Warm Brown



Organic cotton



**Blanket  
Winter**  
1041

**Sweet  
Dreaming**  
154



**Sleepsuit Cocoon**  
2116



**Sleepsuit Sleeveless**  
2121



**Sleepsuit Longsleeve**  
2119

**Billy Bear**  
775





**Summer Blanket**  
Crib: **1039**  
Cot: **1040**  
tog 1.0



**Winter Blanket**  
Crib: **1041**  
Cot: **1042**  
tog 2.0

Summer Blanket: 100% organic cotton // Winter Blanket: 50% organic cotton, 50% recycled coral // Crib: 75 cm x 100 cm // Cot: 100 cm x 150 cm // Packaging: polybag and hangtag



**Playing Cloth**  
**Cheerful Playing**  
**554**

50% organic cotton, 50% recycled coral // Size: 75 x 95 cm // Weight: 825 gr // Filling: recycled fibre fill // Thick and soft mattress // Tags to stimulate rolling, reaching & crawling // Packaging: polybag and hangtag



**Cuddle**  
**Billy Bear**  
**775**

100% recycled coral // filling: recycled fiber fill // Packaging: display card and hangtag



**Sleepsuit Longsleeve**  
**winter tog 2.0**  
**2119** (3-9m / 62-74cm)  
**2120** (9-24m / 74-95 cm)



**Sleepsuit Sleeveless**  
**summer tog 1.0**  
**2121** (3-9m / 62-74cm)  
**2118** (9-24m / 74-95 cm)

100% organic cotton, recycled fiberfil filling // Clever zipper design // Packaging: polybag and hangtag



**Newborn Sleepsuit**  
**Cocoon**  
**2116** (0-3m) incl. hat  
**2117** (3-6m)

100% organic cotton // Comfortable fit // Can be opened to easily change a baby // integrated gloves on the sleeves // Weight: 150 gr // Packaging: polybag and hangtag // tog 1.0



**Footmuff**  
**5009**

50% organic cotton, 40% recycled nylon and 10% recycled coral // filling: recycled fiber fill // Packaging: hangtag and polybag // Size: 40 x 80 cm



**Wrap Blanket**  
**Trendy Wrapping**  
**354**

Outside: 100% organic cotton, inside: 100% recycled coral // Double layer // Size 90x110 cm // Weight: 420 gr // For baby carriers with 3 and 5 point seatbelt // For buggy or carseat, group 0 // Packaging: fabric bag and sleeve



**Comfort Toy**  
**Sweet Dreaming**  
**154**

50% organic cotton, 50% recycled coral // Size 25 x 25 cm // Weight: 55 gr // Offers comfort and joy // Stimulates fine motorskills // Promotes sense of touch // SD packaging: display card and hangtag



**Changing Mat**  
**Happy Dressing**  
**254**

50% organic cotton, 50% recycled coral // Size: 45 x 72 cm // Weight: 225 gr // Fits a standard cushion // Entertains baby while changing // Packaging: fabric bag and sleeve



**Teether**  
**Pacifier cord**  
**785**

100% organic cotton // filling: recycled fiber fill // Size 10 cm long – with handy, universal clip // Easy to attach to clothing and ultra light // Packaging: card and hangtag



**Feeding Pillow**  
**3022**

50% organic cotton, 50% recycled coral // Filling: 100% recycled fibre fill // Size: 75 x 20 x 15 cm // Multi-purpose // Compact and ultra-soft // Packaging: polybag and hangtag

# Smokey Green



Organic cotton

Winter  
Blanket  
1031

Sleepsuit  
Cocoon  
Rainbow  
2097





**Sleepsuit  
Cocoon  
Rainbow**  
2097



**Sleepsuit Summer**  
2108

**Sweet Dreaming**  
153



**Trendy Wrapping**  
353





**Pyjama  
Rainbow**  
7568



**Romper LS  
Rainbow**  
7565



**Sleepsuit Longsleeve  
winter tog 2.0**  
2093 (3-9m / 62-74cm)  
2096 (9-24m / 74-95 cm)



**Sleepsuit Sleeveless  
summer tog 1.0**  
2108 (3-9m / 62-74cm)  
2111 (9-24m / 74-95 cm)

100% organic cotton, recycled fiberfil filling // Clever zipper design // Packaging: polybag and hangtag



**Newborn Sleepsuit  
Cocoon**  
2090 (0-3m)  
2102 (3-6m)



**Newborn Sleepsuit  
Cocoon Rainbow**  
2097 (0-3m)  
2103 (3-6m)

100% organic cotton // Comfortable fit // Can be opened to easily change a baby // integrated gloves on the sleeves // Weight: 150 gr // Packaging: polybag and hangtag // Set including hat // tog 1.0



**Romper LS  
Rainbow**  
7565



**Suit  
Rainbow**  
7566



**Pyjama  
Rainbow**  
7568

100% organic cotton // Weight: 150 gr // A lovely sleeping cocoon with a comfortable fit // Can be opened, to easily change a baby // integrated gloves on the sleeves // Packaging: polybag and hangtag



**Swaddle**  
4013 (80x80cm)  
4016 (120x120cm)



**Cuddle  
Bammy Beaver**  
779

100% organic muslin //  
Packaging: fabric bag and sleeve

100% recycled coral // filling: recycled  
fiber fill // Packaging: display card and  
hangtag



**Summer Blanket**  
Crib: 1035  
Cot: 1038  
tog 1.0



**Winter Blanket**  
Crib: 1031  
Cot: 1034  
tog 2.0

Summer Blanket: 100% organic cotton // Winter Blanket: 50% organic cotton, 50% recycled coral //  
Crib: 75 cm x 100 cm // Cot: 100 cm x 150 cm // Packaging: polybag and hangtag



**Comfort Toy  
Sweet Dreaming**  
153

50% organic cotton, 50% recycled coral //  
Size 25 x 25 cm // Weight: 55 gr // Offers comfort and  
joy // Stimulates fine motorskills // Promotes sense of  
touch // SD packaging: display card and hangtag



**Playing Cloth  
Cheerful Playing**  
553

50% organic cotton, 50% recycled coral // Size: 75 x 95  
cm // Weight: 825 gr // Filling: recycled fibre fill // Thick  
and soft matress // Tags to stimulate rolling, reaching &  
crawling // Packaging: polybag and hangtag



**Wrap Blanket  
Trendy Wrapping**  
353

Outside: 100% organic cotton, inside: 100% recycled  
coral // Double layer // Size 90x110 cm // Weight: 420  
gr // For baby carriers with 3 and 5 point seatbelt //  
For buggy or carseat, group 0 // Packaging: fabric bag  
and sleeve



**Changing Mat  
Happy Dressing**  
253

50% organic cotton, 50% recycled coral //  
Size: 45 x 72 cm // Weight: 225 gr // Fits a standard  
cushion // Entertains baby while changing //  
Packaging: fabric bag and sleeve



**Teether  
Pacifier cord**  
784

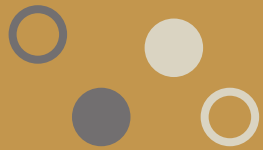
100% organic cotton // filling: recycled fiber fill // Size 10  
cm long – with handy, universal clip // Easy to attach to  
clothing and ultra light // Packaging: card and hangtag



**Feeding Pillow**  
3021

50% organic cotton, 50% recycled coral // Filling:  
100% recycled fibre fill // Size: 75 x 20 x 15 cm // Multi-  
purpose // Compact and ultra-soft // Packaging:  
polybag and hangtag

# Bumblebee





**Sleepsuit  
Longsleeve**  
2067



**Bumble Bonny**  
754



**Winter Blanket**  
Crib: **1011**  
tog 2.0

50% cotton jersey and 50% polyester // Double layer  
crib: 75 cm x 100 cm // Packaging: polybag and  
hangtag



**Changing Pad**  
**Easy Changing**  
**647**

50% cotton jersey, 50% coral // Size: 50x70 cm // Weight:  
260gr // Handy on the go // Folded compact // With tags //  
Can be used for babies up to 2 years // Packaging: carton  
box // Frost Gray: fabric bag and sleeve



**Sleepsuit Longsleeve**  
**winter tog 2.0**  
**2067** (3-9m / 62-74cm)  
**2068** (9-24m / 74-95 cm)

100% cotton jersey, fiberfil filling // Clever  
zipper design // Available in size: 3 - 9  
months // 62 to 74 cm and 9 - 24 months  
// 74 to 95 cm // Packaging: polybag and  
hangtag



**Comfort Toy**  
**Sweet Dreaming**  
**147**

50% cotton jersey and 50% coral // Size 25 x 25 cm //  
Weight: 55 gr // Offers comfort and joy // Stimulates  
fine motorskills // Promotes sense of touch // SD  
packaging: display card and hangtag



**Playing Cloth**  
**Cheerful Playing**  
**547**

50% cotton jersey and 50% coral // Size: 75 x 95 cm //  
Weight: 825 gr // Filling: fibre fill // Thick and soft mattress  
// Tags to stimulate rolling, reaching & crawling //  
Packaging: polybag and hangtag



**Newborn Sleepsuit**  
**Cocoon**  
**2062** (0-3m)

100% Oeko-Tex cotton // Comfortable  
fit // Can be opened to easily change  
a baby // integrated gloves on the  
sleeves // Weight: 150 gr // Packaging:  
polybag and hangtag // tog 0,5



**Wrap Blanket**  
**Trendy Wrapping**  
**347**

Outside coral, inside 100% cotton jersey // Double  
layer // Size 90x110 cm // Weight: 420 gr // For baby  
carriers with 3 and 5 point seatbelt // For buggy or  
carseat, group 0 // Packaging: carton box: Frost Gray,  
Stone Beige, Milky Rust, Smokey Green. Fabric bag  
and sleeve



**Feeding Pillow**  
**3006**

50% cotton jersey, 50% coral // Filling: 100% fibre fill //  
Size: 75 x 20 x 15 cm // Multi-purpose // Compact and  
ultra-soft // Packaging: polybag and hangtag



**Teether**  
**Pacifier cord**  
**753**

100% Oeko-Tex cotton jersey // filling:  
fiber fill // Size 10 cm long - with  
handy, universal clip // Easy to  
attach to clothing and ultra light //  
Packaging: card and hangtag



**Cuddle**  
**Elly Elephant**  
**772**

Oeko-tex cotton jersey with coral // filling: fiber fill  
// Packaging: display card and hangtag



**Cuddle**  
**Bumble Bonny**  
**754**

Oeko-tex cotton jersey with coral // filling: fiber  
fill // Packaging: display card and hangtag

# Gray Mist



**Happy  
Dressing**  
244

**Sweet  
Dreaming**  
144



**Sleepsuit Cocoon**  
2064

**Cheerful Playing**  
544



**Newborn Sleepsuit Cocoon**  
2064 (0-3m)

100% Oeko-Tex cotton // Comfortable fit // Can be opened to easily change a baby // integrated gloves on the sleeves // Weight: 150 gr // Packaging: polybag and hangtag // tog 0,5



**Sleepsuit Sleeveless summer tog 0.5**  
2071 (3-9m / 62-74cm)  
2072 (9-24m / 74-95 cm)

100% cotton jersey // Clever zipper design // Packaging: polybag and hangtag



**Summer Blanket Crib: 999**  
tog 1.0

100% cotton jersey // Double layer crib: 75 cm x 100 cm // Packaging: polybag and hangtag



**Comfort Toy Sweet Dreaming**  
144

50% cotton jersey and 50% coral // Size 25 x 25 cm // Weight: 55 gr // Offers comfort and joy // Stimulates fine motorskills // Promotes sense of touch // SD packaging: display card and hangtag



**Playing Cloth Cheerful Playing**  
544

50% cotton jersey and 50% coral // Size: 75 x 95 cm // Weight: 825 gr // Filling: fibre fill // Thick and soft mattress // Tags to stimulate rolling, reaching & crawling // Packaging: polybag and hangtag



**Wrap Blanket Trendy Wrapping**  
344

Outside coral, inside 100% cotton jersey // Double layer // Size 90x110 cm // Weight: 420 gr // For baby carriers with 3 and 5 point seatbelt // For buggy or carseat, group 0 // Packaging: carton box: Frost Gray, Stone Beige, Milky Rust, Smokey Green. Fabric bag and sleeve



**Changing Mat Happy Dressing**  
244

50% cotton jersey and 50% coral // Size: 45 x 72 cm // Weight: 225 gr // Fits a standard cushion // Entertains baby while changing // Packaging: carton box//Frost Gray, Stone Beige, Milky Rust, Smokey Green: fabric bag and sleeve



**Changing Pad Easy Changing**  
644

50% cotton jersey, 50% coral // Size: 50x70 cm // Weight: 260gr // Handy on the go // Folded compact // With tags // Can be used for babies up to 2 years // Packaging: carton box // Frost Gray: fabric bag and sleeve



**Teether Pacifier cord**  
744

100% Oeko-Tex cotton jersey // filling: fiber fill // Size 10 cm long - with handy, universal clip // Easy to attach to clothing and ultra light // Packaging: card and hangtag



**Cuddle Cas Car**  
748

Oeko-tex cotton jersey with coral // filling: fiber fill // Packaging: display card and hangtag

# Dusty Rose







**Newborn Sleepsuit  
Cocoon  
2063** (0-3m)

100% Oeko-Tex cotton // Comfortable fit // Can be opened to easily change a baby // integrated gloves on the sleeves // Weight: 150 gr // Packaging: polybag and hangtag // tog 0,5



**Sleepsuit Sleeveless  
summer tog 0.5  
2070** (9-24m / 74-95 cm)

100% cotton jersey // Clever zipper design // Packaging: polybag and hangtag



**Summer Blanket  
Crib: 1010**  
tog 1.0

100% cotton jersey // Double layer crib: 75 cm x 100 cm // Packaging: polybag and hangtag



**Comfort Toy  
Sweet Dreaming  
143**

50% cotton jersey and 50% coral // Size 25 x 25 cm // Weight: 55 gr // Offers comfort and joy // Stimulates fine motorskills // Promotes sense of touch // SD packaging: display card and hangtag



**Playing Cloth  
Cheerful Playing  
543**

50% cotton jersey and 50% coral // Size: 75 x 95 cm // Weight: 825 gr // Filling: fibre fill // Thick and soft matress // Tags to stimulate rolling, reaching & crawling // Packaging: polybag and hangtag

**Happy  
Dressing**  
243

**Bella  
Butterfly**  
747



**Teether  
Pacifier  
cord**  
743



**Wrap Blanket  
Trendy Wrapping  
343**

Outside coral, inside 100% cotton jersey // Double layer // Size 90x110 cm // Weight: 420 gr // For baby carriers with 3 and 5 point seatbelt // For buggy or carseat, group 0 // Packaging: carton box: Frost Gray, Stone Beige, Milky Rust, Smokey Green. Fabric bag and sleeve



**Changing Mat  
Happy Dressing  
243**

50% cotton jersey and 50% coral // Size: 45 x 72 cm // Weight: 225 gr // Fits a standard cushion // Entertains baby while changing // Packaging: carton box // Frost Gray, Stone Beige, Milky Rust, Smokey Green: fabric bag and sleeve



**Feeding Pillow  
3008**

50% cotton jersey, 50% coral // Filling: 100% fibre fill // Size: 75 x 20 x 15 cm // Multi-purpose // Compact and ultra-soft // Packaging: polybag and hangtag



**Changing Pad  
Easy Changing  
643**

50% cotton jersey, 50% coral // Size: 50x70 cm // Weight: 260gr // Handy on the go // Folded compact // With tags // Can be used for babies up to 2 years // Packaging: carton box // Frost Gray: fabric bag and sleeve



**Teether  
Pacifier cord  
743**

100% Oeko-Tex cotton jersey // filling: fiber fill // Size 10 cm long - with handy, universal clip // Easy to attach to clothing and ultra light // Packaging: card and hangtag



**Cuddle  
Bella Butterfly  
747**

Oeko-tex cotton jersey with coral // filling: fiber fill // Packaging: display card and hangtag

# Midnight Blue



**Trendy Wrapping**  
346



**Wally Whale**  
750

**Sweet Dreaming**  
146



**Newborn Sleepsuit  
Cocoon**  
2122 (0-3m) incl. hat  
2123 (3-6m)

100% organic cotton // Comfortable fit // Can be opened to easily change a baby // integrated gloves on the sleeves // Weight: 150 gr // Packaging: polybag and hangtag // tog 1.0



**Comfort Toy  
Sweet Dreaming**  
146

50% cotton jersey and 50% coral // Size 25 x 25 cm // Weight: 55 gr // Offers comfort and joy // Stimulates fine motorskills // Promotes sense of touch // SD packaging: display card and hangtag



**Changing Pad**  
646

50% cotton jersey, 50% coral // Size: 50x70 cm // Weight: 260gr // Handy on the go // Folded compact // With tags // Can be used for babies up to 2 years // Packaging: carton box // Frost Gray: fabric bag and sleeve



**Wrap Blanket  
Trendy Wrapping**  
346

Outside coral, inside 100% cotton jersey // Double layer // Size 90x110 cm // Weight: 420 gr // For baby carriers with 3 and 5 point seatbelt // For buggy or carseat, group 0 // Packaging: carton box: Frost Gray, Stone Beige, Milky Rust, Smokey Green. Fabric bag and sleeve



**Changing Mat  
Happy Dressing**  
246

50% organic cotton, 50% recycled coral // Size: 45 x 72 cm // Weight: 225 gr // Fits a standard cushion // Entertains baby while changing // Packaging: fabric bag and sleeve



**Teether  
Pacifier cord**  
746

100% Oeko-Tex cotton jersey // filling: fiber fill // Size 10 cm long – with handy, universal clip // Easy to attach to clothing and ultra light // Packaging: card and hangtag



**Cuddle  
Wally Whale**  
750

Oeko-tex cotton jersey with coral // filling: fiber fill // Packaging: hangtag

# Orchid Blush





**Happy Dressing**  
235



Winter 3.0



Autumn 2.0



Spring 1.5



Summer 1.0

**Sleepsuit 4 seasons**  
**2056** (3-9m / 62-74cm)  
**2057** (9-24m / 74-95 cm)

Inner suit: 100% Oeko-Tex cotton jersey // Outer suit: 100% Oeko-Tex cotton jersey with ultra-thin polyester filling // Ultrasoft and practical // including inner- and outer bag // Clever construction with zipper design // Can be used with open legs or closed legs // Packaging: polybag and hangtag // Winter, outer + inner suit (tog 3.0) // Autumn, outer suit with sleeves (tog 2.0) // Spring, outer suit without sleeves (tog 1.5) // Summer, inner suit without sleeves (tog 1.0)



**Comfort Toy**  
**Sweet Dreaming**  
**135**

50% cotton jersey and 50% coral // Size 25 x 25 cm // Weight: 55 gr // Offers comfort and joy // Stimulates fine motorskills // Promotes sense of touch // SD packaging: display card and hangtag



**Playing Cloth**  
**Cheerful Playing**  
**535**

50% cotton jersey and 50% coral // Size: 75 x 95 cm // Weight: 825 gr // Filling: fibre fill // Thick and soft matress // Tags to stimulate rolling, reaching & crawling // Packaging: polybag and hangtag



**Wrap Blanket**  
**Trendy Wrapping**  
**335**

Outside coral, inside 100% cotton jersey // Double layer // Size 90x110 cm // Weight: 420 gr // For baby carriers with 3 and 5 point seatbelt // For buggy or carseat, group 0 // Packaging: carton box: Frost Gray, Stone Beige, Milky Rust, Smokey Green. Fabric bag and sleeve



**Cuddle**  
**Elly Elephant**  
**771**

Oeko-tex cotton jersey with coral // filling: fiber fill // Packaging: display card and hangtag

# Frost Grey



**Sleepsuit  
Cocoon**  
2085

**Winter  
Blanket**  
1025

**Teether  
Pacifier  
cord**  
767



**Happy  
Dressing**  
250

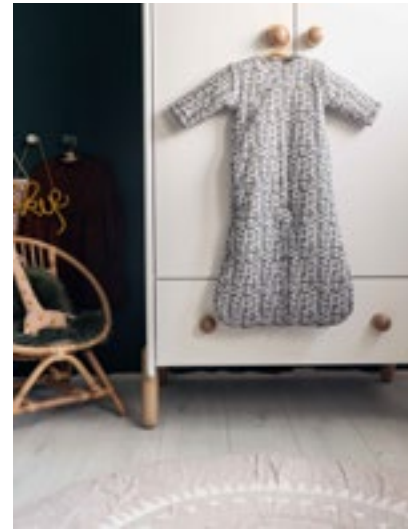


**Sleepsuit  
Longsleeve**  
2084

**Happy  
Dressing**  
250



**Trendy Wrapping**  
350



**Sleepsuit**  
**4 seasons**  
2086



**Feeding Pillow**  
3018







Autumn

Winter

Spring

Summer

**Sleepsuit 4 seasons**  
**2086** (3-9m / 62-74cm)  
**2087** (9-24m / 74-95 cm)

Inner suit: 100% Oeko-Tex cotton jersey // Outer suit: 100% Oeko-Tex cotton jersey with ultra-thin polyester filling // Ultrasoft and practical // including inner- and outer bag // Clever construction with zipper design // Can be used with open legs or closed legs // Packaging: polybag and hangtag // Winter, outer + inner suit (tog 3.0) // Autumn, outer suit with sleeves (tog 2.0) // Spring, outer suit without sleeves (tog 1.5) // Summer, inner suit without sleeves (tog 1.0)



**Sleepsuit Longsleeve**  
**winter tog 2.0**  
**2083** (3-9m / 62-74cm)  
**2084** (9-24m / 74-95 cm)



**Sleepsuit Sleeveless**  
**summer tog 0.5**  
**2079** (3-9m / 62-74cm)  
**2080** (9-24m / 74-95 cm)

Made of 100% cotton jersey // fiberfil filling // Clever zipper design // Packaging: polybag and hangtag



**Newborn Sleepsuit**  
**Cocoon**  
**2085** (0-3m)

100% Oeko-Tex cotton // Comfortable fit // Can be opened to easily change a baby // integrated gloves on the sleeves // Weight: 150 gr // Packaging: polybag and hangtag // tog 1.0



**Changing Pad**  
**Easy Changing**  
**650**

50% cotton jersey, 50% coral // Size: 50x70 cm // Weight: 260gr // Handy on the go // Folded compact // With tags // Can be used for babies up to 2 years // Packaging: carton box // Frost Gray: fabric bag and sleeve



**Winter Blanket**  
**Crib: 1025**  
**Cot: 1026**  
 tog 2.0

50% cotton jersey and 50% polyester // Double layer crib: 75 cm x 100 cm // Packaging: polybag and hangtag



**Comfort Toy**  
**Sweet Dreaming**  
**150**

50% cotton jersey and 50% coral // Size 25 x 25 cm // Weight: 55 gr // Offers comfort and joy // Stimulates fine motorskills // Promotes sense of touch // SD packaging: display card and hangtag



**Playing Cloth**  
**Cheerful Playing**  
**550**

50% cotton jersey and 50% coral // Size: 75 x 95 cm // Weight: 825 gr // Filling: fibre fill // Thick and soft mattress // Tags to stimulate rolling, reaching & crawling // Packaging: polybag and hangtag



**Changing Mat**  
**Happy Dressing**  
**250**

50% cotton jersey and 50% coral // Size: 45 x 72 cm // Weight: 225 gr // Fits a standard cushion // Entertains baby while changing // Packaging: carton box // Frost Gray, Stone Beige, Milky Rust, Smokey Green: fabric bag and sleeve



**Feeding Pillow**  
**3018**

50% cotton jersey, 50% coral // Filling: 100% fibre fill // Size: 75 x 20 x 15 cm // Multi-purpose // Compact and ultra-soft // Packaging: polybag and hangtag



**Wrap Blanket**  
**Trendy Wrapping**  
**350**

Outside coral, inside 100% cotton jersey // Double layer // Size 90x110 cm // Weight: 420 gr // For baby carriers with 3 and 5 point seatbelt // For buggy or carseat, group 0 // Packaging: carton box: Frost Gray, Stone Beige, Milky Rust, Smokey Green. Fabric bag and sleeve



**Teether**  
**Pacifier cord**  
**767**

100% Oeko-Tex cotton jersey // filling: fiber fill // Size 10 cm long – with handy, universal clip // Easy to attach to clothing and ultra light // Packaging: card and hangtag



**Cuddle**  
**Elly Elephant**  
**759**

Oeko-tex cotton jersey with coral // filling: fiber fill // Packaging: display card and hangtag

# Muddy River





**Happy Dressing**  
245

**Maddy Monkey**  
749

**Wrap Blanket**  
345



**Comfort Toy**  
**Sweet Dreaming**  
145

50% cotton jersey and 50% coral // Size 25 x 25 cm // Weight: 55 gr // Offers comfort and joy // Stimulates fine motorskills // Promotes sense of touch // SD packaging: display card and hangtag



**Playing Cloth**  
**Cheerful Playing**  
545

50% cotton jersey and 50% coral // Size: 75 x 95 cm // Weight: 825 gr // Filling: fibre fill // Thick and soft mattress // Tags to stimulate rolling, reaching & crawling // Packaging: polybag and hangtag



**Wrap Blanket**  
**Trendy Wrapping**  
345

Outside coral, inside 100% cotton jersey // Double layer // Size 90x110 cm // Weight: 420 gr // For baby carriers with 3 and 5 point seatbelt // For buggy or carseat, group 0 // Packaging: carton box: Frost Gray, Stone Beige, Milky Rust, Smokey Green. Fabric bag and sleeve



**Changing Mat**  
**Happy Dressing**  
245

50% cotton jersey and 50% coral // Size: 45 x 72 cm // Weight: 225 gr // Fits a standard cushion // Entertains baby while changing // Packaging: carton box // Frost Gray, Stone Beige, Milky Rust, Smokey Green: fabric bag and sleeve



**Changing Pad**  
**Easy Changing**  
645

50% cotton jersey, 50% coral // Size: 50x70 cm // Weight: 260gr // Handy on the go // Folded compact // With tags // Can be used for babies up to 2 years // Packaging: carton box // Frost Gray: fabric bag and sleeve



**Teether**  
**Pacifier cord**  
745

100% Oeko-Tex cotton jersey // filling: fiber fill // Size 10 cm long – with handy, universal clip // Easy to attach to clothing and ultra light // Packaging: card and hangtag



**Cuddle**  
**Maddy Monkey**  
749

Oeko-tex cotton jersey with coral // filling: fiber fill // Packaging: display card and hangtag

# Activity Toys



Oeko-Tex Standard

**Activity Patch**  
764



**Rainbow Puzzle  
Bumblebee**  
761

"Find the pocket to hide your raisins"



Whose Trail?  
777



Whose Baby?  
778



Pramtoy  
766

Activity House  
763





**Rainbow Puzzle  
Gray Mist**  
760



**Rainbow Puzzle  
Bumblebee**  
761

Cuddlepuzzle in beautiful rainbow shape and soft fabrics. // Can you succeed to get the shapes in the correct format again? And with your restored rainbow, it is yours to sleep on and play and cuddle with. // With Snoozebaby tags, offering endless hours of fun and at the same time stimulates the fine motorskills and sense of touch. // Made of 100% Oekotex coral with foam filling. // Size 29 x 18 x 7 cm // Weight: 130 gr // Packaging: hangtag



**Activity  
House**  
763



**Activity  
Patch**  
764

A beautiful interactive play/deco cushion. All windows and door closed? All stuff inside the house? To sleep you go! // Ideal for on the go or on the sofa. With Snoozebaby tags, offering endless hours of fun and at the same time stimulates the fine motorskills and sense of touch. // Made of 100% Oekotex coral with foam filling. // Size 24 x 36 cm // Weight: 200 gr // Packaging: hangtag

Activity Patch: No WiFi is required for this type of entertainment! And your child cannot swipe this device, but can really play with it. // Can he get the animals right again? Can be attached to a box or cradle by knotting the cords (and/or use the velcro on the cords). // Made of 100% Oekotex material. // Size 34 x 12 x 4 cm // Weight: 70 gr // Packaging: hangtag



**Rainbow Puzzle  
Bumblebee**  
766

Elegant, stylish and playful pramtoy in warm peaceful colours. // Lovely to play with, to touch, to pull, to pinch or to watch. // With a tinkle bell, little mirror and needless to say: Snoozebaby tag, offering endless hours of fun and at the same time stimulates the fine motorskills and sense of touch. // Made of 100% Oekotex coral and interlock. // Size 47 cm (excl clips). // Weight: 40 gr // Packaging: display card and hangtag



**Whose Trail?**  
777

A new challenge for kids from 2-4 years // Can you manage to find the trail for the right animal? // Exiting booklet with 6 new characters. // Stimulates knowledge of animals/ sounds/trails. // 100% organic cotton canvas and felt. // Size: 12 x 12 cm // Weight: 30 gr // Packaging: display card



**Whose Baby?**  
778

A new challenge for kids from 2-4 years // Can you manage to find the match between baby and parent? // Exiting booklet to talk about grown ups that have babies too! // 100% organic cotton canvas and felt. // Size 12 x 12 cm // Weight: 30 gr // Packaging: display card



**Buggy Booklet**  
762

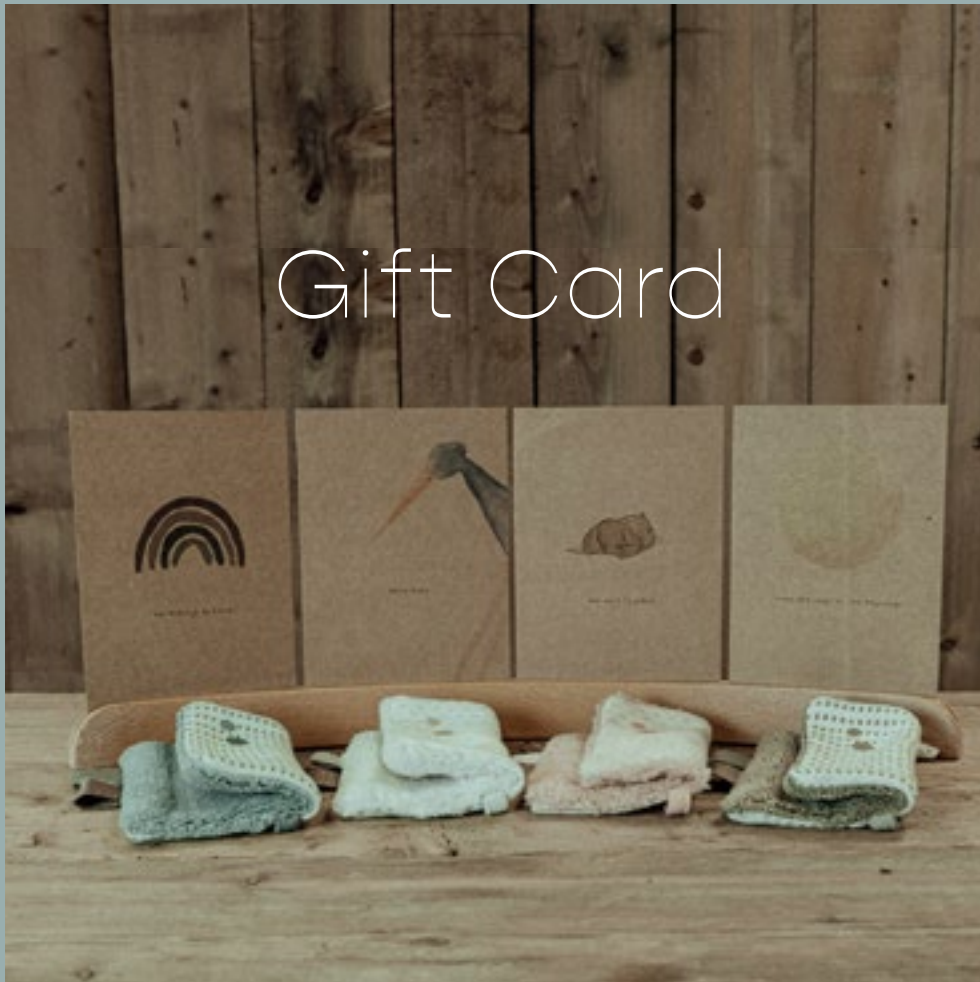
Beautiful baby booklet with sweet prints, crinkling pages and with lots of things happening. // Easy to attach to your buggy or carseat. // With Snoozebaby tags, offering endless hours of fun and at the same time stimulates the fine motorskills and sense of touch. // Made of 100% Oekotex cotton. // Size 10 x 10 cm // Weight: 30 gr // Packaging: display card



**Activity  
Booklet**  
765

Beautiful booklet with sweet prints, crinkling pages and with lots of things happening. // The balls can be loosened and attached via the velcro. Just put them back on the right spots, can you do it? // Easy to attach to your buggy or carseat. // With Snoozebaby tags, offering endless hours of fun and at the same time stimulates the fine motorskills and sense of touch. // Made of 100% Oekotex cotton with foam filling. // Size 12 x 12 cm // Weight: 30 gr // Packaging: display card

# Gift Card



*Send some  
sweet softness.  
Truly magnificent  
to send and  
certainly to receive*

A new baby in your friend's or relative's life, but unable to visit the new citizen straight away? No apping or texting, but simply write down your wishes and happiness the old-school way: on an actual birthcard. With Snoozebaby's birthcard-gift-set, you can choose from 5 different hand-made cards. In combination with a matching mini-Sweet Dreaming 'the world's greatest comfort toy offering comfort, joy and softness'.



#### **Small SD + post card + envelope**

450 Gray Mist // 451 Dusty Rose // 452 Storm Blue // 453 Frost Grey // 454 Bumblebee // 455 Stone Beige//456 Milky Rust//457 Smokey Green // 458 Warm Brown

Made of 50% cotton jersey and 50% coral // Offers comfort and joy // Stimulates fine motorskills // Promotes sense of touch. The set comes with an envelope so you only need 1 or 2 stamps (set is < 50 gr) and it is ready to go! Ideal for shops for impulse purchases on the counter! Size 15 x 15 cm // Packaging: polybag and sticker

## About snoozebaby

Snoozebaby, een Nederlands merk, ontwerpt baby textiel accessoires in de categoriën verzorging, knuffels en mobiliteit. Alle items worden gekenmerkt door de beroemde labels. Onze kwalitatief hoogwaardige, functionele en ultra zachte producten zoals wikkeldekens, boxkleden, knuffels en doekjes worden in Nederland ontworpen en over de hele wereld gedistribueerd. Snoozebaby introduceert twee keer per jaar nieuwe artikelen.

### English

Snoozebaby is a Dutch baby textile accessory brand offering baby comfort products with an eye for detail and an understanding of trends. All our products, the nursery, soft toy, mobility, are exquisitely soft. Every item of the must-have, Dutch-designed collection, features our brand's famous tags. Snoozebaby introduces new items twice a year, keeping our brand contemporary. Our products are rightly loved all over the world.

### Deutsch

Snoozebaby – der holländische Brand für Baby – und Kleinkindausstattung, designt seine Produkte wie Wickeldecken, Spielmatten und Vieles mehr nach dem „Label“-Konzept. Das Spielen und Berühren der Labels hilft den Babies, feine motorische Fähigkeiten zu trainieren und den Tastsinn zu entwickeln. Die qualitativ hochwertigen Produkte werden alle in Amsterdam in den Niederlanden entwickelt und weltweit verkauft. Zweimal im Jahr werden Produktinnovationen auf den Markt gebracht.

### Français

Snoozebaby, une marque hollandaise, crée des produits avec des différentes étiquettes pour les bébés et enfants: des grandes couvertures, des tapis de jeu, des doudous plats et des doudous animaux. Tous les dessins sont créés aux Pays-Bas et les produits de haute qualité sont distribués dans le monde entier. Snoozebaby introduit 2 fois par an des nouveautés.

### Español

Snoozebaby es una marca holandesa que diseña y crea productos con diferentes etiquetas para los bebés y los niños: doudous o toallitas mimosas, suaves muñecos, alfombras de juego, prácticos cambiadores, arrollos confortables, etc. Todos los diseños se crean en Holanda y estos productos de alta calidad se distribuyen en todo el mundo. Nuestros artículos se venden en tiendas especializadas en puericultura, tiendas dedicadas al juguete, diseño, regalo y webshops. Snoozebaby introduce novedades dos veces al año.

### Italiano

Snoozebaby, azienda olandese specializzata in prodotti per neonati e bambini fino a 2 anni, crea i propri articoli - tra i quali coperte, giocattoli morbidi, tappeti gioco e molto altro - basandosi sul concetto di "etichetta". Giocare con le etichette e toccarle aiuta infatti il bambino a sviluppare le proprie capacità motorie e stimola il senso del tatto. I prodotti Snoozebaby, riconosciuti per l'alta qualità, sono ideati e sviluppati ad Amsterdam (Olanda) - e vengono distribuiti in tutto il mondo. Il lancio di nuovi prodotti è previsto due volte l'anno.

### Polski

Snoozebaby w swojej ofercie posiada m.in. kocyki -otulaczki, zabawki, przytulanki, maty do zabawy, kocyki do przewijania i wiele innych produktów opartych na koncepcji „metki”. Zabawa metkami o różnych kolorach, kształtach i strukturze materiału rozwija zdolno ci motoryczne dziecka, stymuluje zmysł wzroku i dotyku. Artykuły Snoozebaby projektowane są w Amsterdamie, w Holandii i sprzedawane na całym świecie. Dwa razy do roku na rynek wprowadzane są nowo ci.

### 中國

Snoozebaby · 源自荷兰的婴儿用品品牌 · 着眼于细节和时尚前沿 · 为宝宝们提供极尽舒适的纺织用品。品牌涵盖了婴儿日常用品、绒布玩具和新生儿衣物等丰富的产品线，极尽精致、柔软。所有这些宝宝必需品均由荷兰本土设计，并引入独特的织标设计概念。品牌创始人Marleen，出于很单纯的动机开始创造Snoozebaby的系列产品。她发现玩偶和软质玩具上的织标对于自己的小宝宝有特别神奇的安抚作用。无论在宝宝睡着或醒着的时候，可爱的小标签都能轻易的吸引宝宝的注意力，然而，当她在市场上试图寻找类似的玩具和产品时，却很难找到满意的产品，于是Snoozebaby诞生了。为保持品牌的时尚领先性，每年两次推出新品。凭借科学的理念、创新的设计和高品质产品，Snoozebaby赢得了世界各地父母的喜爱。

### 日本語

Snoozebabyは、2歳までの子供と赤ちゃん向けの製品に特化したオランダのブランドです。柔らかいおもちゃ、ブランケット、衣類などのすべての製品は、最高級の生地を使用して作られています。Snoozebabyコレクションすべてのアイテムには、Snoozebaby特有のタグが付いています。それぞれのタグはサイズ、色、感触が異なります。赤ちゃんは自分の好きなタグを発見します。タグで遊ぶことにより、赤ちゃんは運動能力を発達させ、触覚を刺激します。高品質で知られるSnoozebabyの製品は、オランダのアムステルダムで設計および開発され、OEKO-TEX®認定ファブリックのみを使用しトルコで生産されています。

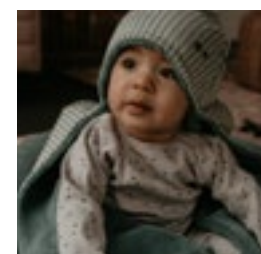
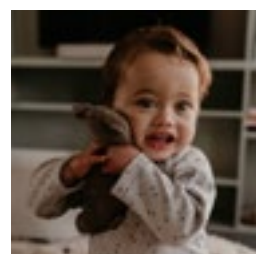
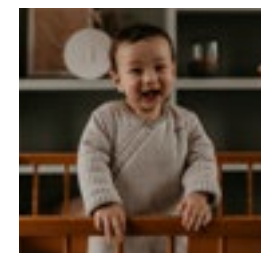
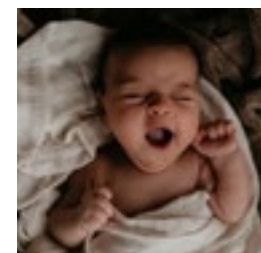
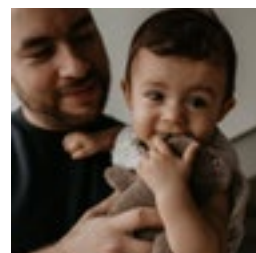
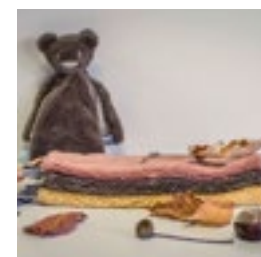
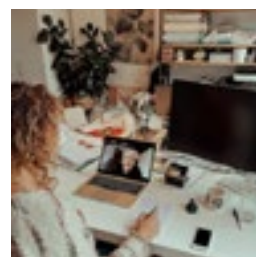
## Keep in touch

#snoozebaby  
@snoozebaby.amsterdam



We love to be inspired.

So share your photo's and tag @snoozebaby.amsterdam  
or use #snoozebaby



Graphic Design  
Snoozebaby

Photography  
Capaz, Eduard Stegeman &  
Elaine Froukje Photography

Design + Styling  
Janneke Vens





